



REPUBLIC OF CONGO



SELF-ASSESSMENT FOR THE READINESS-PACKAGE



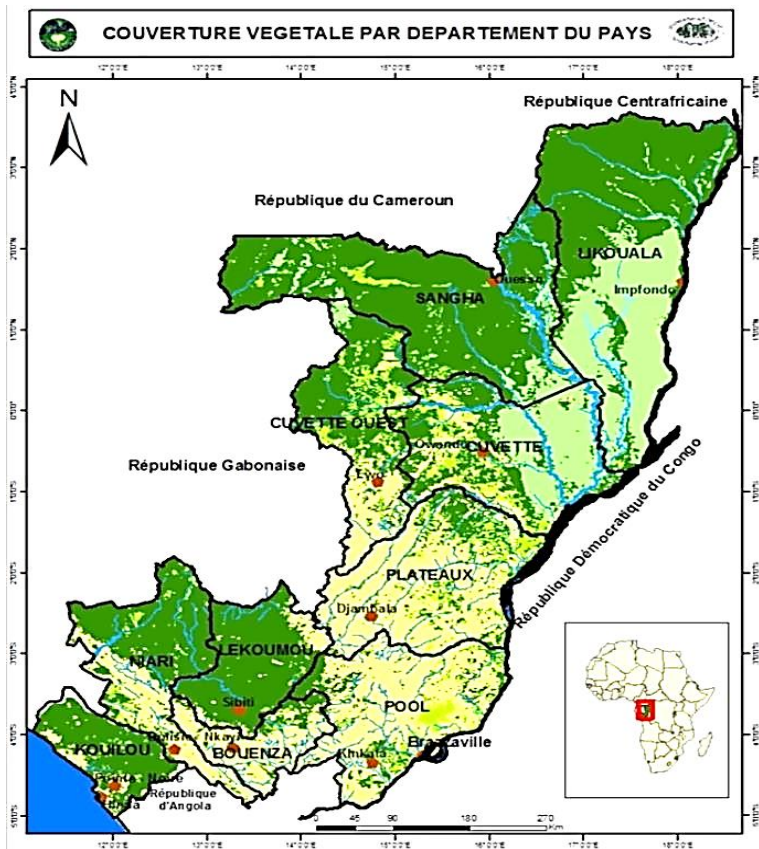
FCPF PC-22, Accra, 26 September 2016

Content

1. Country context
2. REDD+ vision of the Republic of Congo
3. Summary of R-Package and highlights
4. Consultation process
5. Results of self-assessment per component
6. Work program for readiness
7. Conclusions

Country Context

- **Total area:** 342,000 km² (34.2 million ha)
- **Population:** 4.8 millions inhabitants, 14 inhabitants/km²
- **Forest area:** 23.5 million ha, 69% of national territory
- Republic of Congo develops **REDD+** to promote sustainable development and as a pillar its green economy vision



The Republic of Congo's REDD+ Vision

VISION ON SUSTAINABLE DEVELOPMENT

By 2030, the Congo will have established evidence for sustainable development through the rational management of natural resources, improvement of governance, development and modernization of infrastructure and basic social services, all by diversifying its economy.



Congo's
vision on
REDD+

VISION ON AGRICULTURE

By 2035, agriculture will be the major sector of the Congolese economy, to aliment the country's population and generate export revenues while preserving the natural heritage. Congo aims at self-sufficiency for basic products, to produce at least half of the needs for other food products and export more raw and processed products while preserving its ability to meet the needs of future generations.



VISION ON FOREST POLICIES

Congolese forests are sustainably managed and contribute to the emergence of a green economy, poverty reduction, the well being of future generations of the country and the fight against climate change.

COMIFAC CONVERGENCE PLAN

Central African countries manage their forests sustainably and in a coordinated manner for the well being of their populations, conservation of biodiversity and in order to safeguard the global environment.

Overview on R-Package Assessment

Realistic picture:

- **10 x Green**
- **17 x Yellow**
- **7 x Orange**
- **0 x Red**

No.	Criteria	Assessment
1	Accountability and transparency	Green
2	Operating mandate and budget	Yellow
3	Multi-sector coordination mechanisms and cross-sector collaboration	Yellow
4	Technical supervision capacity	Yellow
5	Funds management capacity	Yellow
6	Feedback and grievance redress mechanism	Yellow
7	Participation and engagement of key stakeholders	Yellow
8	Consultation processes	Green
9	Information sharing and accessibility of information	Yellow
10	Implementation and public disclosure of consultation outcomes	Yellow
11	Assessment and analysis	Green
12	Prioritization of direct drivers / barriers to forest carbon stock enhancement	Green
13	Links between drivers/barriers and REDD+ activities	Green
14	Action plans to address natural resource rights, land tenure, governance	Yellow
15	Implications for forest law and policy	Green
16	Selection and prioritization of REDD+ strategy options	Green
17	Feasibility assessment	Yellow
18	Implications of strategy options on existing sectoral policies	Yellow
19	Adoption and implementation of legislation / regulations	Yellow
20	Guidelines for implementation	Orange
21	Benefit-sharing mechanism	Yellow
22	National REDD+ registry and system monitoring REDD+ activities	Orange
23	Analysis of social and environmental safeguard issues	Green
24	REDD+ strategy design with respect to impacts	Orange
25	Environmental and Social Management Framework	Orange
26	Demonstration of the methodology	Green
27	Use of historical data and adjusted for national circumstances	Yellow
28	Technical feasibility of the methodological approach and consistency with UNFCCC/IPCC guidance and guidelines	Yellow
29	Documentation of monitoring approach	Green
30	Demonstration of early system implementation	Orange
31	Institutional arrangements and capacities	Yellow
32	Identification of relevant non-carbon aspects and social and environmental issues	Yellow
33	Monitoring, reporting and information sharing	Orange
34	Institutional arrangements and capacities	Orange

Progress on Key REDD+ Tools

Highlights:

- Complete draft of **national REDD+ strategy** validated
- Inclusion of emerging drivers of deforestation
- Broad **consultations** confirmed by stakeholders
- **National reference level** submitted to UNFCCC
- Re-establishment of the position of **Prime Minister**, REDD+ process will be anchored there (CONA-REDD high-level chamber)
- Mobilization of resources for REDD+ investments (e.g. **FIP**)
- Republic of Congo joined **Central African Forest initiative (CAFI)**

Consultation Process

Independent self-assessment process:

- ❖ Facilitated by an independent organization present in the country (WCS)
- ❖ CN-REDD did not participate in the consultations
- ❖ Strength: Frank exchange
- ❖ Weakness: Additional information and clarification on the readiness process could not be provided in the discussions

Consultation process of key stakeholders:

- ❖ Consultations per stakeholder group over a two-week period
 - ✓ Four groups: Civil society (CACO-REDD), public sector (REDD+ related ministries), provincial level (CODEPA-REDD), technical and financial partners
 - ✓ Observation: Representation of various organizations in the REDD+ process has been changing since 2011, which affects knowledge and assessment
- ❖ Joint final assessment workshop
 - ✓ To provide clarification and additional information
 - ✓ To discuss different views and consolidate a shared assessment
 - ✓ To be transparent and get consensus

Results for Component 1a

National REDD+ management arrangements:

- ❖ Most indicators are yellow (good progress)

Progress:

- ❖ Management entities are in place and functional (CONA-REDD, CODEPA-REDD, CN-REDD)
- ❖ Progress on decentralization of REDD+ process

Remaining work:

- ❖ Develop Feedback and Grievance Redress Mechanism
- ❖ Further strengthen cross-sectoral coordination

Results for Component 1b

Consultation, participation and outreach:

- ❖ Most indicators are yellow

Progress:

- ❖ Broad consultations confirmed by stakeholders
- ❖ Organized through CACO-REDD including RENAPAC
- ❖ Positive feedback on participatory CODEPA-REDD

Remaining work:

- ❖ Foster implementation of communication plan
- ❖ Continue capacity building for stakeholders
- ❖ Improve access to information

Results for Component 2a

Assessment of Land Use, Land Use Change Drivers, Forest Law, Policy and Governance:

- ❖ Most indicators are green (significant progress)

Progress made:

- ❖ Studies regarding drivers analysis exist
- ❖ National Land Use Plan (PNAT) is work in progress

Remaining work:

- ❖ Finalize PNAT

Results for Component 2b

REDD+ Strategy Options:

- ❖ Most indicators are yellow

Progress made:

- ❖ Several rounds of consultations on national REDD+ strategy
- ❖ Draft national REDD+ strategy validated

Remaining work:

- ❖ Revise national REDD+ strategy to incorporate results from SESA process

Results for Component 2c

Implementation Framework:

- ❖ Most indicators are yellow

Progress made:

- ❖ Advanced legal framework to ensure REDD+ implementation
- ❖ Analysis of implementation framework is available, assessment of options ongoing (e.g. regarding national financing instrument)

Remaining work:

- ❖ Finalize implementing provisions for laws and regulations
- ❖ Establish national REDD+ registry
- ❖ Further develop benefits sharing mechanism (national principles and benefit sharing plan for ER Program)

Results for Component 2d

Social and Environmental Impacts:

- ❖ Most indicators are orange

Progress made:

- ❖ National standards (PCI-REDD+) developed
- ❖ SESA process is ongoing, draft report available
- ❖ Extensive field-based consultations for SESA
- ❖ Draft ESMF and sub-frameworks as a result of the SESA process are available

Remaining work:

- ❖ Complete SESA consultations and finalize SESA report
- ❖ Finalize ESMF and sub-frameworks
- ❖ Field-test PCI-REDD+

Results for Component 3

Reference Level:

- ❖ Most indicators are yellow

Progress made:

- ❖ National reference level submitted to UNFCCC
- ❖ Sub-national reference level for the ER Program is work in progress
- ❖ Consistency between national and sub-national levels

Remaining work:

- ❖ Adjust national reference level based in feedback from UNFCCC technical assessment

Results for Component 4a

National forest monitoring system:

- ❖ Most indicators are yellow

Progress made:

- ❖ Concept for MRV system developed

Remaining work:

- ❖ Operationalize MRV system
- ❖ Build capacities at CNIAF
- ❖ Consider establishment of independent REDD+ observer

Results for Component 4b

Information System for Multiple Benefits, Other Impacts, Governance, and Safeguards:

- ❖ Most indicators are orange

Progress made:

- ❖ Non-carbon benefits have been identified
- ❖ Mapping of multiple benefits of REDD+ available

Remaining work:

- ❖ Further develop safeguards information system

Response to TAP Recommendation: Detailed Work Plan

MINISTERE DE L'ECONOMIE FORESTIERE
DU DEVELOPPEMENT DURABLE ET DE
L'ENVIRONNEMENT

C A B I N E T

COORDINATION NATIONALE REDD

REPUBLIQUE DU CONGO
Unité * Travail * Progrès



**Programme de travail
pour la consolidation de la phase de préparation à la REDD+
entre August 2016 et Octobre 2017**

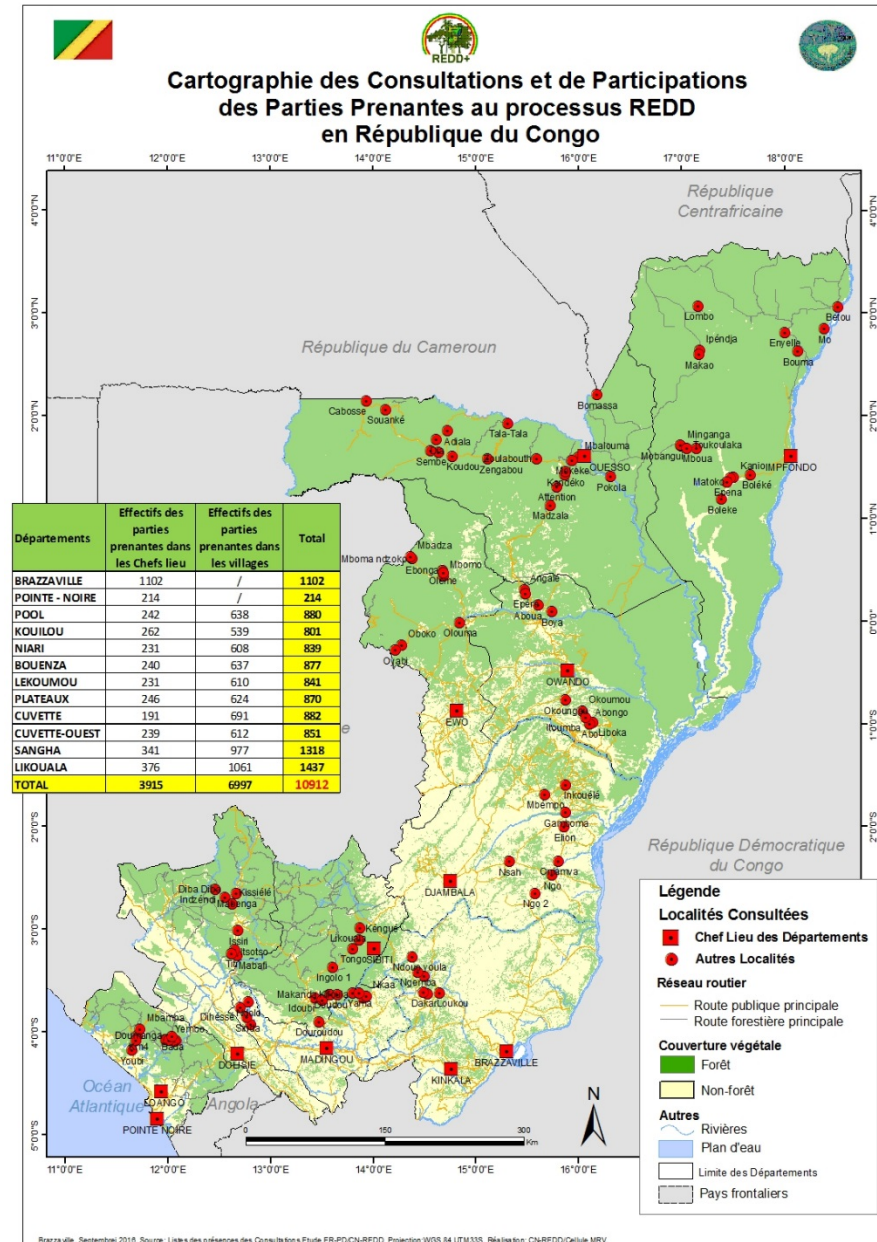
Réponse au rapport TAP, points 34, 35, 37 et 38

[Work plan](#) available online

Response to TAP Recommendation: Communication

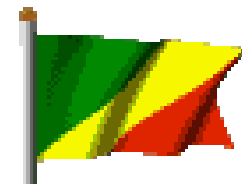
Work plan includes:

- Strengthening of CACO-REDD based on UNDP assessment
- Improving means of communication
- Establishing website
- Access to information



Conclusion

- A lot of progress has been made: Development of all major REDD+ tools initiated or advanced
- Implementation of Warsaw REDD+ Framework: Congo is among first countries that submitted reference level to UNFCCC
- Honest assessment
- R-Package assessment helpful to understand stakeholders' perceptions and focus remaining readiness work
- Detailed work program as response to TAP recommendation
- **While some critical readiness work remains to be done, it is important to pave the way for phase 2 and 3 of REDD+ and nurture the national process with experience from field-based activities**



THANK YOU



Pour la République du Congo

**Georges Claver BOUNDZANGA:
Coordonnateur National REDD+**